



**CHA Industries**

4201 Business Center Drive • Fremont, CA 94538 • 510/683-8554 • Fax 510/683-3848

# Cold-Weld Pinch-Off Devices



**Device dimensions on reverse of this sheet.**

CHA devices for pinching off tubing produce a hermetically perfect cold-weld of tube walls; ends are neat and clean. The most common application is pinching off vacuum exhaust tubing of fully annealed OFHC copper. Other soft metals, such as fully annealed aluminum, .070" OD x .010 wall Kovar, annealed nickel, thin wall 52 alloy and platinum, can be pinched off. While not primarily for pressure applications, the CHA vacuum seal will hold relatively low pressures (75-100 lbs.)

Jaws are hardened, ground, high speed tool steel (Rockwell C 60 to 65). Extra jaws are available for

replacement if required by heavy usage.

Model POD-375-O, with offset jaws, permits pinch-off access in confined situations. Jaws for POD-375 and POD-375-O are interchangeable. Extra jaws for each are available for interchange.

Model POD-375-H hydraulic actuated, pinch-off tool can be used single-handed by the operator, leaving a free hand for holding or supporting the part to be sealed. This tool is not available with offset jaws.

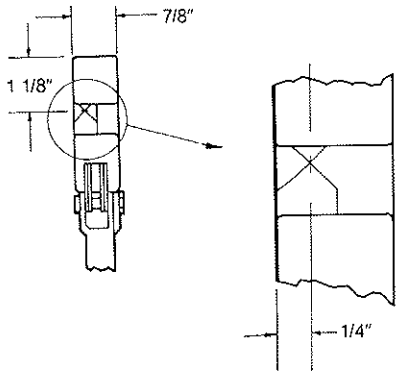
**Model Number**

POD-375, 375-H  
POD-749, 750, 751

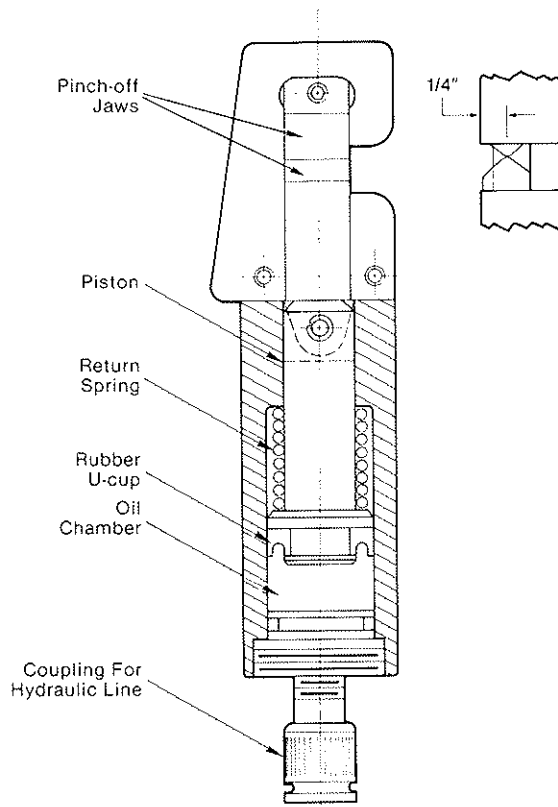
**Capacity (OFHC Copper)**

0 to 3/8" OD x .049 wall  
0 to 3/4" OD x .060 wall

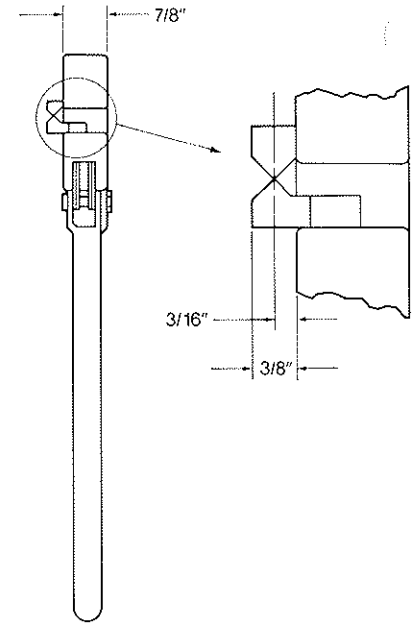
### Pinch-off Device Dimensions



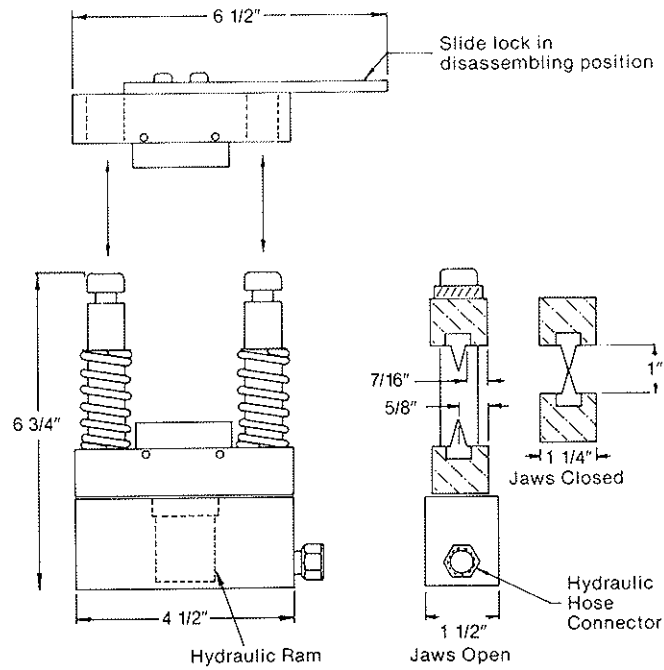
POD-375



POD-375-H



POD-375-O



POD-749